

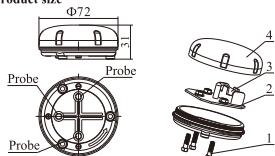
Use Manual for Wireless Water Immersion Detector

0WRX.466.771

Note: This product needs to be used by matching with our company's ceramic hard sealing wireless auto shut-off valve (F104E). Under normal circumstances, 1 piece of main control valve can be equipped with 5 pieces of wireless water immersion detectors.

1) Product overview

1) Product size

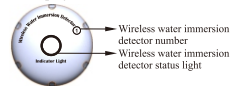


No.	Part Name
1	Stainless steel probe
2	Wireless water immersion circuit board
3	Alkaline dry battery
4	Top cover for wireless water immersion detector

2) Parameter

Model No.	Name	Built-in battery parameters	Environment temperature
F104F	Wireless water immersion detector	12V/ 23A Alkaline dry battery	5-50℃

3) Interface display






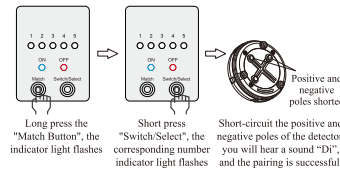
*The indicator light will flash when the positive and negative poles of the wireless detector are connected, it means it is in the water leakage state.

*Number: When there is water leakage or the battery of the detector is insufficient, the user can intuitively distinguish which detector is sending the signal from the display interface of the main control valve. A numbered sticker is attached with products for users to paste by themselves.

2. Wireless Detector Pairing

Pairing method:

Press and hold the  button on the main control valve for more than 3 seconds, at this time the No. 1 light in the indicator light  flashes, then short press , after selecting the corresponding indicator light position, connect any positive and negative poles of the wireless water immersion probe, the indicator light of the wireless water immersion flashes, you will hear a sound "Di" from the main control valve, and the indicator light is always on, indicating that the pairing is successful. After success, you can test the display status of the main control valve after the positive and negative poles are shorted. If there is the alarm, the pairing is normal. The main control valve supports 5 wireless detectors to access the network.



3. Product Installation

1. The wireless water immersion detector relies on the conduction of the electrode to determine whether there is water leakage. When installing, please place it in a low-lying place where water may accumulate.

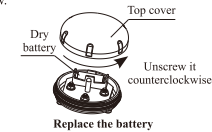
2. The wireless water immersion detector needs to be installed in the effective sensing area. When the installation location is selected, short-circuit the positive and negative poles of the probe on the detector, and check whether there is a leak alarm on the main control valve to confirm whether the installation location can effectively sense.

Note: The main control valve cannot be installed in a confined space where the signal is isolated, such as thicker load-bearing walls, metal confined spaces, and places with magnetic interference. The above spaces will cause the main control valve and wireless water immersion detector to fail to communicate. Please test the induction before installation!

4. Battery power and replacement method

The new battery of the wireless water immersion detector is

normally valid for 3 years (ps: It emits 32 pulses when in use). When the wireless detector battery is insufficient, the indicator light of the corresponding number of the main control valve and the "OFF" indicator light flash together, and the buzzer alarms at the same time. It indicates that the battery on the wireless water immersion detector needs to be replaced. After the battery is replaced, the flashing indicator light and the buzzer alarm sound should be released. The replacement method is shown in the figure below.



5. Warranty Card

Dear client:

This warranty card is the guarantee proof of our products. It is kept by client self. You could get the after-sales services from the supplier. Please keep it properly. It couldn't be retrieved if lost. It couldn't be repaired free of charge under the below conditions:

1. Guarantee period expired. (One year from the manufacturing date);
2. Damage resulting from using, maintenance, and keeping that are not in accordance with the instruction;
3. Damage resulting from repairing not by the appointed maintenance personnel;

4. Content in guarantee proof is unconfirmed with the label on the real good or be altered;
5. Damage resulting from force majeure.

Product Name	Wireless Water Immersion Detector		
Model		Code of Valve Body	
Purchase Company Name		Tel/Cel.	
Problem			
Solution			
Date of Repairing	Maintenance Man Signature	Date of Accomplishment	